



PASSION-DRIVEN CAREER EXPLORATION



BACK TO SCHOOL PSYCHOLOGY SUMMER 2024





SUMMER 2024



SCAN ME



BACK TO SCHOOL PSYCHOLOGY

The Back to School suite of summer programmes has been designed with the start of the new school term in mind. With 1-2 weeks before most schools are back in session, this programme is ideal for students looking for in depth career insights ahead of their university application. The programme is also suitable for students interested in pursuing career curiosities ahead of the new school term.

Over the course of the programme, you will dive into the world of psychology, learn the fundamentals of the profession, and discover the exciting career pathways open to you.

This 1-week experience offers the opportunity to delve into health, forensic and clinical, and sport psychology. You will participate in interactive seminars and workshops, designed to inspire curiosity, critical thinking, and reflection.



Ages 13-15



Ages 16-18

PROGRAMME CONTENT

- Introducing Psychology
- Design a Study
- Ethical Issues
- Interactive Debates
- Health Psychology
- Sport Psychology
- Forensic Psychology at the Royal Court of Justice
- Clinical Psychology at London Hospital

2024 DATES

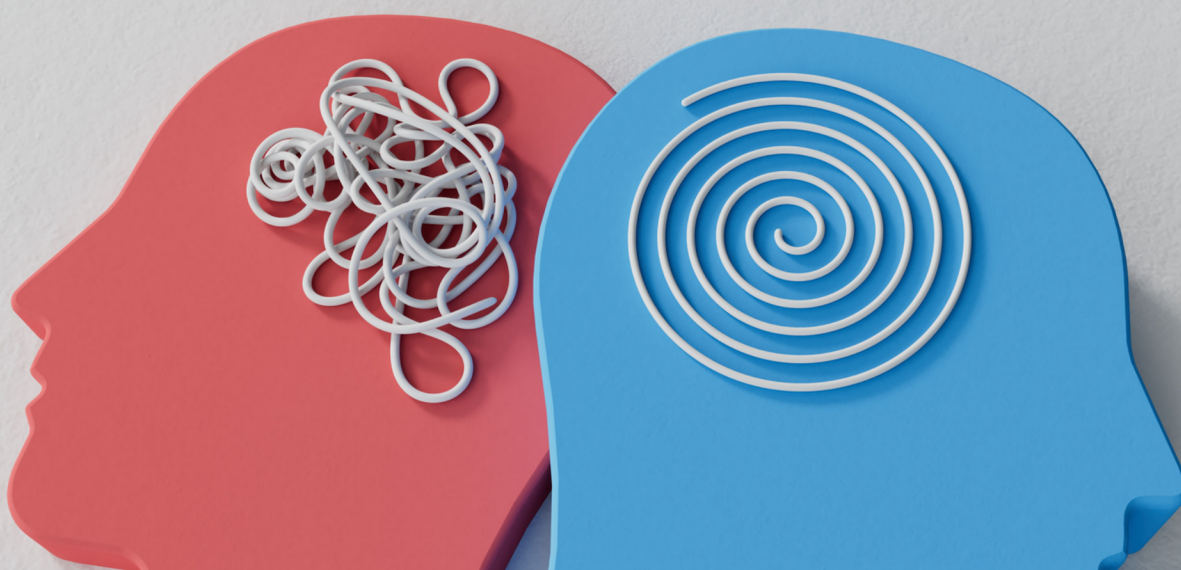


18th Aug – 23rd Aug

Back to School - Psychologist Programme - Sample timetable

Sunday	Monday	Tuesday	Wednesday	Thursday	Friday
Breakfast					
Arrivals & Check-in	Introduction to Psychology	Research & Collecting Data	Re-offending & rehabilitation	Royal Courts of Justice trip - Forensic Psychology	Health Psychology
Lunch					
Arrivals & Check-in	Interactive Debating Session	Ethical Issues in Psychology	Sports Psychology	London Hospital trip - Clinical Psychology	Departures
Dinner					
Evening activity	Evening activity	Evening activity	Evening activity	Evening activity	Departures

Please note: This timetable is for illustrative purposes and is subject to change





THE CAMPUS

ProEd Summer Experiences are held at Imperial College. Situated in South Kensington, right in the heart of the 'Albertropolis', the area is famous for its Edwardian architecture.

Immerse yourself the rich history that South Kensington has to offer, just a stone's throw away from the Royal Albert Hall and the Natural History, Science and Victoria & Albert museums.

Most of the student halls are situated on campus, providing ample opportunity to explore the famous vicinity. With Harrods and Hyde Park on your doorstep, you will never be short of things to do in your time out of class.



FAQ'S

WHAT'S INCLUDED IN THE FEES?

- Full accommodation, cooked breakfast and dinner.
- Programme lectures, workshops and simulations.
- All excursions.
- Official certificate of completion.
- Written tutor reports.
- Comprehensive travel insurance for all residential programmes.
- Airport transfers are not included in the fees but can be arranged for an additional fee.



WHO ARE THE TUTORS?

Our teaching staff are experts in their field, many of whom are PhD qualified, and have experience in teaching undergraduate and graduate-level students.

We recruit many of our tutors from leading UK universities, including prestigious institutions within the esteemed Russell Group (specifically the G5 universities) which is composed of top-ranked universities in the country.

The course content of our programmes has been overseen and designed with the collaboration of our partners at G5 and other elite UK universities.



HOW DO I GET TO THE CAMPUS?

The campus is located less than 20 miles from London's Heathrow Airport, with easy transport links by train, underground or taxi in about 45 minutes.

Most of our students fly to London Heathrow or Gatwick, Heathrow being the more convenient for travel to the campus.

We can also arrange a private airport transfer service through one of our partner travel firms. The driver will meet you at arrivals and take you directly to your accommodation.



FAQ'S

DO I REQUIRE A VISA?

If you hold a UK or EU passport, you should not require a visa to attend our summer programmes.

If you are from outside the EU, we suggest you search the UK Government website to check requirements.

For students that require a visa, we will issue an official acceptance letter which you can use to apply for your visa and at the boarder if required.



HOW DO I ENROL?

To enrol, please visit www.proedetal.com and complete the online application form. You can secure your place on one of our programmes by either paying in full or by making a deposit of £995.

Once your application form has been received, a member of our admissions team will be in touch to provide you with a means of payment, and to confirm your place on the programme.

Should you have any questions, please contact us at: info@proedetal.com



AM I ATTENDING AN INTERNSHIP?

We are an 'internship' or 'work experience' simulation provider. Our courses blend immersive workshops with industry professionals, lectures, and opportunities to network with professionals from industry.

We work closely with several partners from a wide variety of industries to provide a 'real world' insight into your chosen career.



